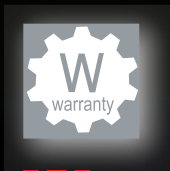
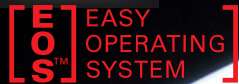


# M-Line M4700e Garage Door Operator



Lifetime Parts  
Warranty



EASY  
OPERATING  
SYSTEM



The M-Line's M4700e two-light operator is a feature-rich, reliable system designed to perform, built to last and guaranteed to provide years of smooth, troublefree operation. Its advanced digital Easy Operating Systems (EOS™) provides a user friendly set up which makes for a more efficient and faster installation. The direct current (DC) Smart Motor®, coupled with a belt or chain drive system, ensures an amazingly quiet operation.

Marantec

Access Systems ➤ Automatically The Best Choice

# M4700e Specification

## Electrical

Power Supply: 120 VAC/60 Hz  
Control Voltage: 24 VDC  
Motor Voltage: 24 VDC  
Thermal Protection: Automatic  
Power Cord: 6ft (3-Prong)

## Operator Features

Travel Rate-Main: 5.5 in/sec  
Push & Pull Force: 700 Newton  
(3/4 HPCS™)\*  
Operating force and system  
sensitivity for open and close  
position independently adjustable  
Logic Type: Microprocessor with  
Built-In Surge Suppressor  
Limit Settings: Electronic  
Class II - Low Voltage Connections:  
Quick Connect Terminals  
Display: 8-LED Operation/  
Diagnostic system

Operator weight: 10 lbs

Dimensions: 14½" x 14⅝" x 6¾"  
(L x W x H)

## Photo Eye Sensors Safety System

Non-impact, advanced Infrared  
Safety Sensors reversing system.  
Complies with all UL 325 require-  
ments and safety regulations.

## Radio Controls

Receiver: Modular, wireless code  
learning  
Frequency: 315 MHz (Homelink®  
compatible)  
Technology: Multibit code

## Digital Transmitter

Included Transmitter:  
2-channel MINI  
Operating Range: 100ft approx.  
Battery: One 3V battery

## Wired Controls

Modular Multi-Function Wall  
Control with Vacation/Lock Switch

## Lighting System

- Time controlled
- Two (2) bulbs, each 60W Max.  
(not provided)

## Lens Cover

High impact, heat resistant, UL  
recognized plastic, two lens covers

## Safety and Convenience

- Meets and exceeds all UL 325  
requirements
- Easy Operating System (EOS™)
- External devices Quick Connect  
Terminals located on the rear of  
the operator for an easier and  
quicker installation

- Infrared photo eye protection  
system
- Safety reversal (sensing  
technology) system, door  
stops from closing upon  
contacting a person or object.
- Warning System (lights flash)  
during an obstructed condition
- Manual emergency release in  
case of power failure
- On-Command Door Activation  
(OCDA™), programmable  
"open" intermediate position to  
vent the garage
- Maximum Run Timer – Protects  
against damage to door and  
operator, door stops and  
reverses

## Energy Conservation Feature:

- Adjustable light timer from 30  
seconds to a maximum of  
4 minutes 30 seconds

## Self Learn Force System:

- Monitors and controls  
motor force every cycle  
(Smart Motor®) to optimize  
operation force requirements

## Soft Start/Soft Stop:

- Electronically Controlled -  
Prevents premature door and  
operator wear and provides  
quieter operation

## Self-Diagnostic System:

- LED error code indicator for a  
more efficient (quicker) installation  
and system troubleshooting
- System reset function clears the  
system memory and restores  
default system settings

## Warranty: Lifetime on parts Drive System (Rail)

The best in advanced engineering  
and materials. One piece semi-closed  
fully assembled drive system with  
a high strength galvanized steel  
finished C-rail, available with a steel-  
reinforced belt or a full steel chain.

Drive system overall length with  
including operator for  
7ft. door: 10'-6½"

Door Height Supported:  
7ft, 8ft, 10ft.

Headroom Clearance  
Required: 1¼"

Trolley: Includes emergency  
release, easy reconnect

## Colors (optional)

Rails and hardware are available  
in two colors: black or white

## Transmitters

Two styles of digital remote control transmitters  
in three different configurations: 2-channel  
MINI, 4-channel MINI, and 3-channel MICRO  
remotes for controlling other devices.  
Unique, multi-bit technology, LED control  
button verification.

## Automated Door Lock LOCMATIC G20

Replaces and renders obsolete manually operated  
locks (such as slidebars, padlock, etc.) used to secure  
automated sectional garage doors. It operates  
with the same controls that operate the LOCMATIC  
Ready operator such as transmitters, wall control  
and wireless keyless entry system. Installer friendly,  
easily connects to work automatically with a  
LOCMATIC ready operator, simply plug in a harness  
and connect two wires.

## Modular Multi-Function Wall Station

Provides door operation and convenience from  
inside the garage. Compact, stylishly designed to fit  
in a standard single gang electrical box. Illuminated  
push-button. Security vacation/lock switch. Light  
control. Individual control stations can be combined  
into one solid panel.

## Wireless Keyless Entry System (WKES)

Convenient, 4-digit PIN. Controls up to 3  
different garage doors. Code security. Weather  
resistant. Provides temporary access to  
authorized visitors or service personnel.

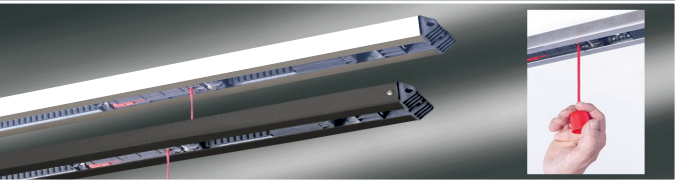
## New Connection Terminals Location for External Devices/Accessories and Modular Receiver Antenna

- The new external devices/accessories Quick Connect  
terminals integrate all external devices connections  
in a central location, **on the rear of the operator**,  
providing for an easier and quicker installation,  
easier connectivity verification and aesthetically  
pleasing installation.
- Innovative concept where the receiver module is  
simply plugged into the unit. This allows for quick  
and simple frequency changes.

\* Horsepower comparable in strength (HPCS™), using lifting force specifications to a 3/4HP  
garage door operator.

Marantec reserves the right to make design and technical specifications changes without notice  
Patents: 4 625 291, 4 88 531, 7 009 592 (other patents pending)

## Accessories



Marantec America Corporation  
5705 Centerpoint Court • Gurnee, IL 60031  
p. 847.478.1500 • f. 847.478.0348



Access Systems ➤ Automatically The Best Choice

[www.marantecamerica.com](http://www.marantecamerica.com)