

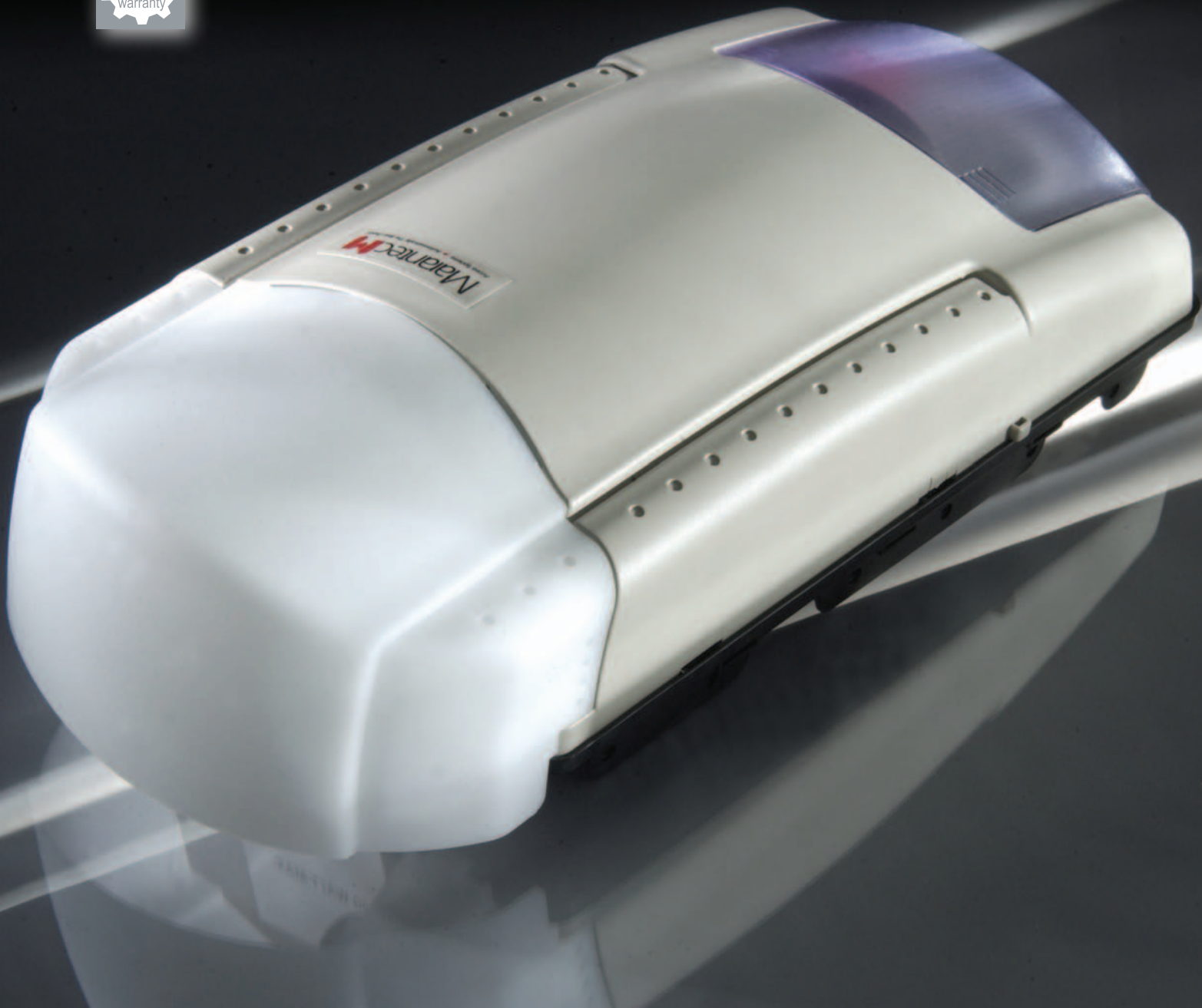


Line

Q-7500 Garage Door Opener System



Lifetime Parts
Warranty



The Q-Line is a feature-rich, reliable system designed to perform, built to last and guaranteed to provide years of smooth, troublefree operation. Its advanced digital operating system with Direct Current (DC) Smart Motor, coupled with a belt or chain drive system, ensures an amazingly quiet operation inside the garage.

Marantec

Access Systems ➤ Automatically The Best Choice

Q-7500 Specification

Electrical	
Power Supply:	120V/60Hz
Control Voltage:	24V
Motor Voltage:	24V DC
Thermal Protection:	Automatic
Line Cord:	6ft. (3-Prong)
Powerhead Features	
Travel Rate-Main:	5.5in/sec. approx.
Push & Pull Force:	500 Newton
Force adjustment:	Independent up/down if required
Logic Type:	Microprocessor with Built-In Surge Suppressor
Limit Settings:	Electronic
Low Voltage Connections:	Screwless
Display:	4-LED carousel
Radio Controls	
Receiver:	Modular, wireless code learning
Frequency:	315MHz (Homelink® compatible)
Technology:	Multibit code
Digital Transmitter	
Included Transmitter:	2-channel MINI
Operating Range:	100ft approx.
Battery:	One 3V battery
Wired Controls	
Modular Multi-Function Wall Control with Vacation/LockSwitch	
Lighting System	
Time controlled 1 bulb, 60W max	

Lens Cover	
High impact, heat resistant, UL recognized plastic, 1-lens cover	
Safety and Convenience	
<ul style="list-style-type: none"> Infrared photo eye protection system Safety reversal system Max. 30 sec. run time Manual emergency release Warning (system lights flash) during/after obstructed condition 	
Self Learn Force System:	
<ul style="list-style-type: none"> Monitors and controls motor force every cycle (Smart Motor®) to optimize operation force requirements 	
Soft Start/Soft Stop:	
<ul style="list-style-type: none"> Electronically Controlled Diagnostic System: System fault warning (system lights flash) Error code LED indicator 	
Warranty: Lifetime on parts	
Drive System (Rail)	
The best in advanced engineering and materials. One piece semi closed high strength galvanized steel C-rail, fully assembled drive systems are available with a steel-reinforced elastometer belt or full steel chain.	
Drive system overall length for 7ft. door:	10' 10¼"
Door Height Supported:	7ft, 8ft, 10ft.
Maximum Door Opening:	7'4"
Headroom Clearance Required:	1¼"
Trolley:	Includes emergency release, easy reconnect
Colors	
Rails and hardware are available in two colors: black and white	

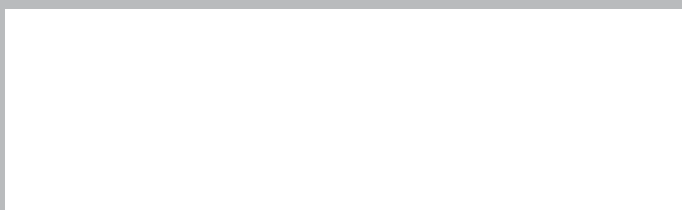
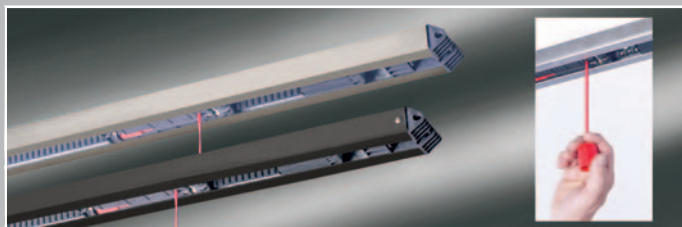
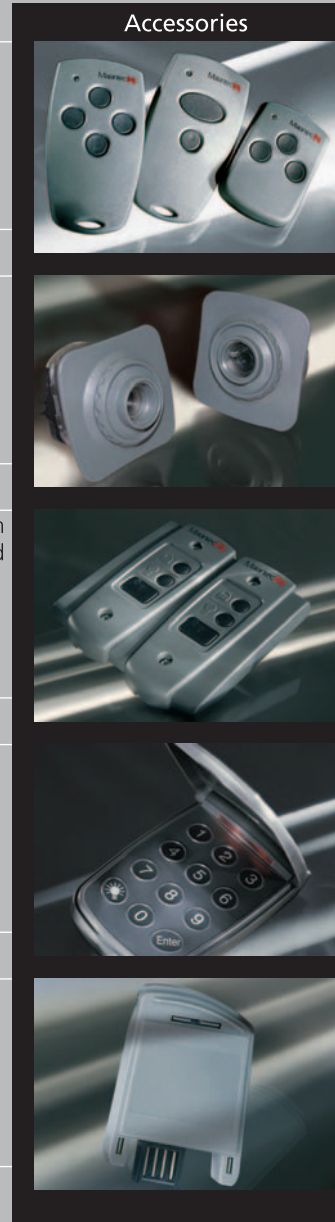
Transmitters
Two styles of digital remote control transmitters in three different configurations. 2-channel MINI. 4-channel MINI (optional) and 3-channel MICRO (optional) remotes for controlling other devices. Unique, multi-bit technology, LED control button verification.

Photo Eye Safety System
Advanced, infrared safety system. Inherent reversal system. Screwless terminal design for installation ease of pre-wired garages and standard/retrofit applications. Complies with all safety regulations.

Modular Multi-Function Wall Station
Provides door operation and convenience from inside the garage. Compact, stylishly designed to fit in a standard single gang electrical box. Illuminated push-button. Security vacation/lock. Light control. Individual control stations can be combined into one solid panel.

Wireless Keyless Entry (WKES) System
Convenient, 4-digit PIN. Controls up to 3 different garage doors. Code security. Weather resistant. Provides temporary access to authorized visitors or service personnel.

Modular Receiver Antenna
Innovative concept where the receiver module is simply plugged into the unit. This allows for quick and simple frequency changes to occur.



Marantec America Corporation
5705 Centerpoint Court • Gurnee, IL 60031
p. 847.478.1500 • f. 847.478.0348



Access Systems ▶ Automatically The Best Choice

www.marantecamerica.com